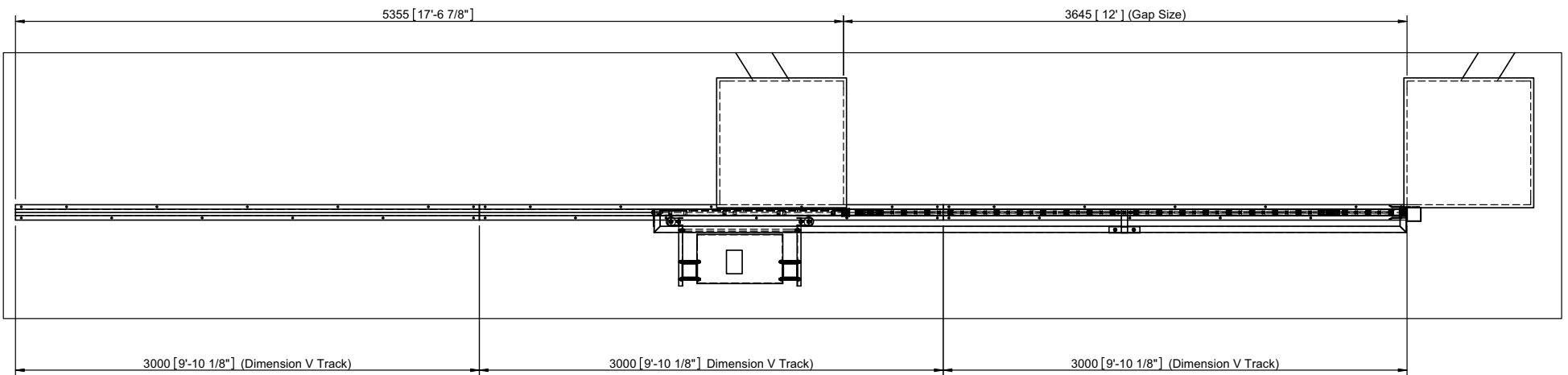
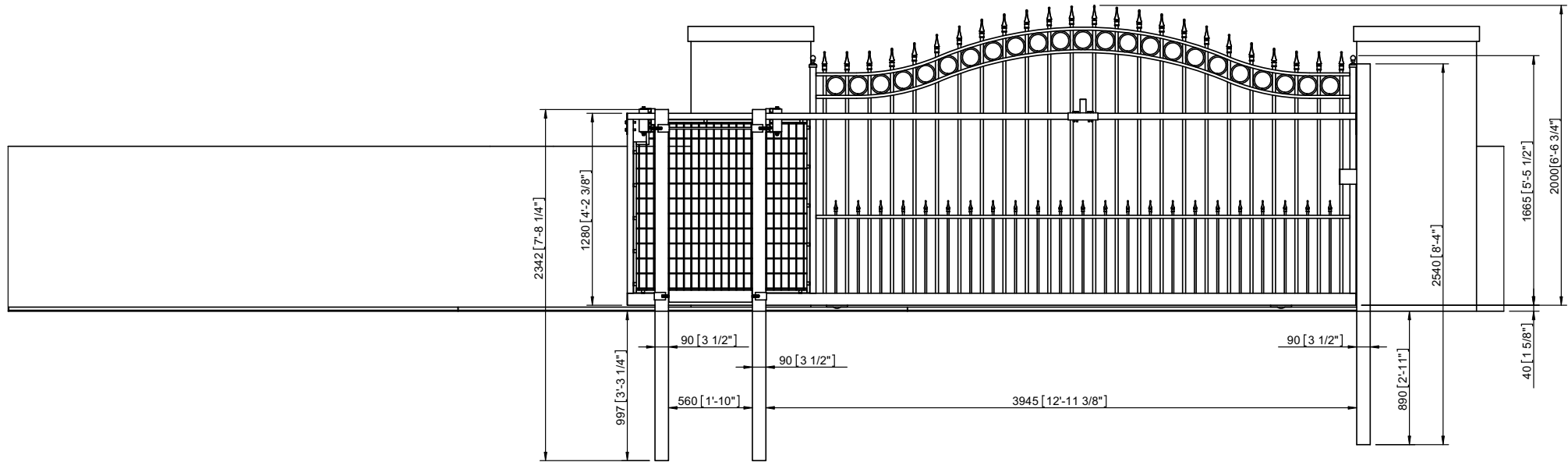


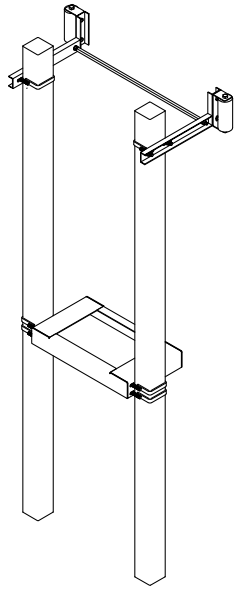
Amazing Gates Sliding Gates System

Installation Instructions for the Sliding Gate System Only
For operator/accessory installation refer to the owners manual for the specific
operator/accessory you are installing

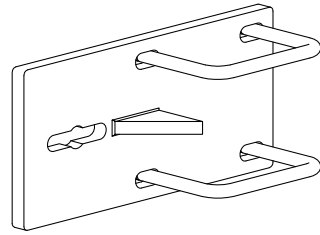
You can also watch our installation video Online @ amazinggates.com



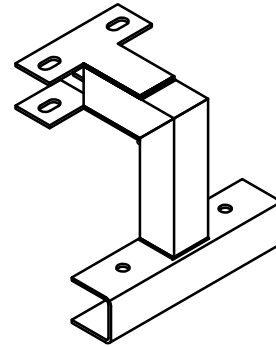
AMAZING GATES OF AMERICA LLC.



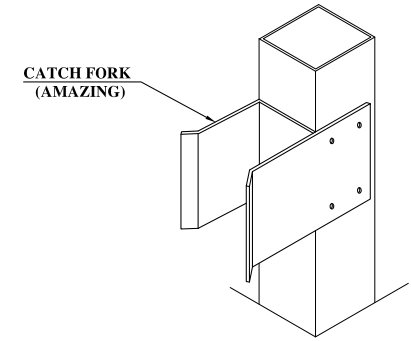
DETAIL SLG & PLATFORM



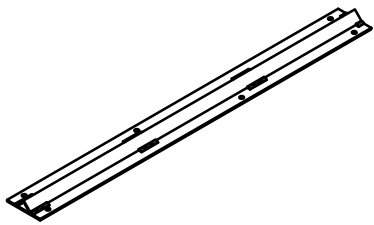
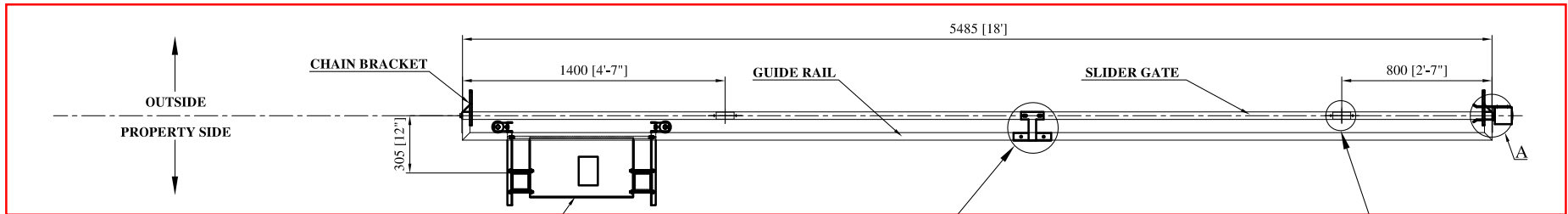
DETAIL CHAIN BRACKET



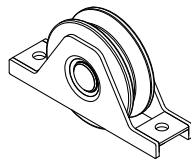
DETAIL GUIDE RAIL ATTACH ARM



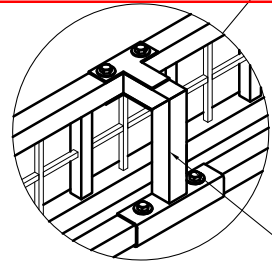
DETAIL A



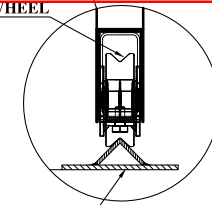
DETAIL V TRACK



DETAIL WHEEL



GUIDE RAIL ATTACH ARM



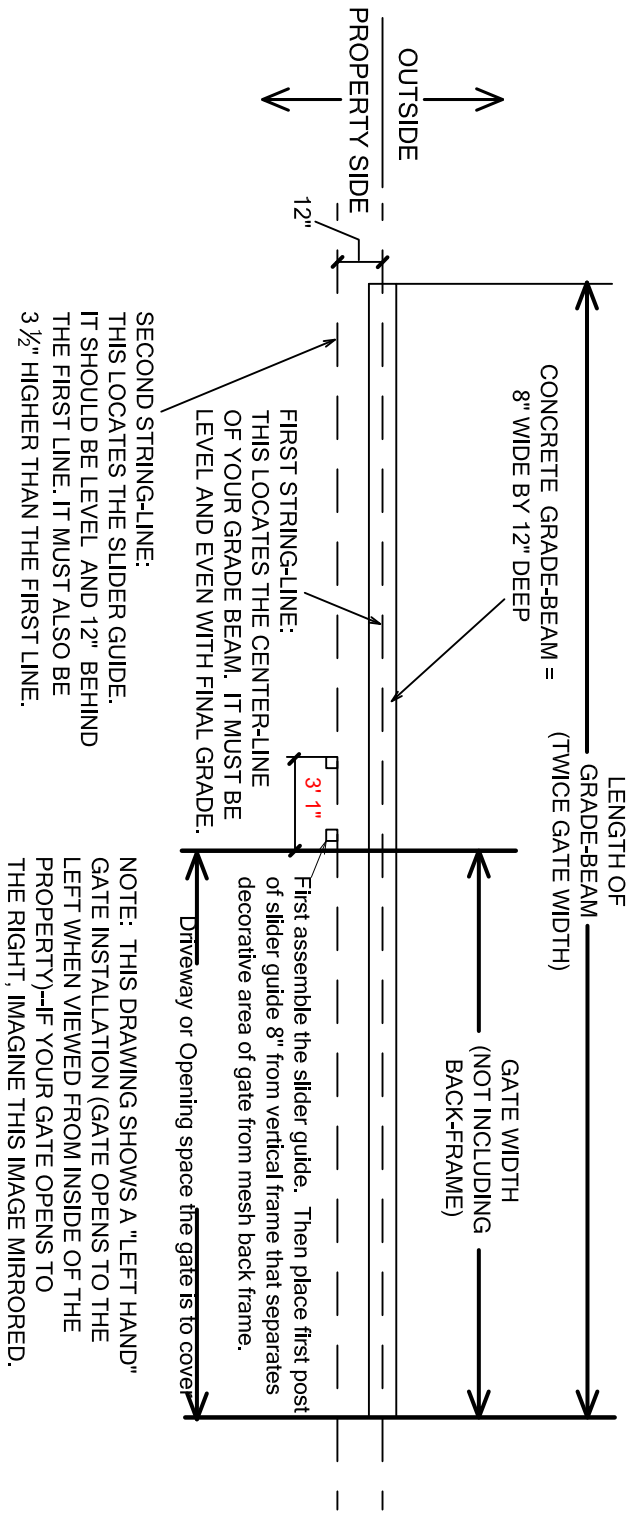
V TRACK



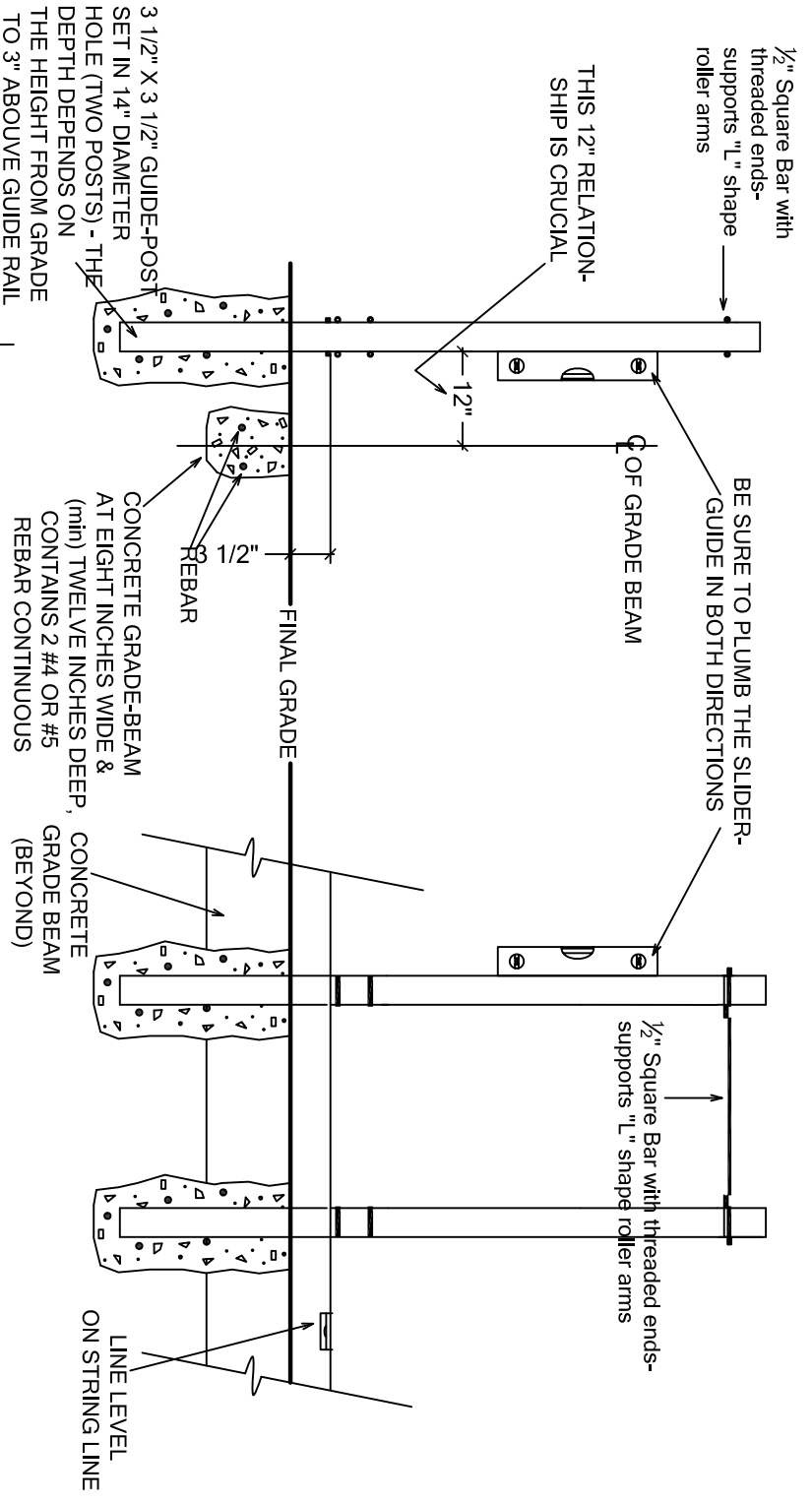
AMAZING GATES OF AMERICA LLC.

Slide Gate System parts List:

1x (SLG) slider guide w/platform / 1pair chain bracket / 1x attach arm / 1x catch fork / 1pair V wheels / V-track- quantity as required per setup



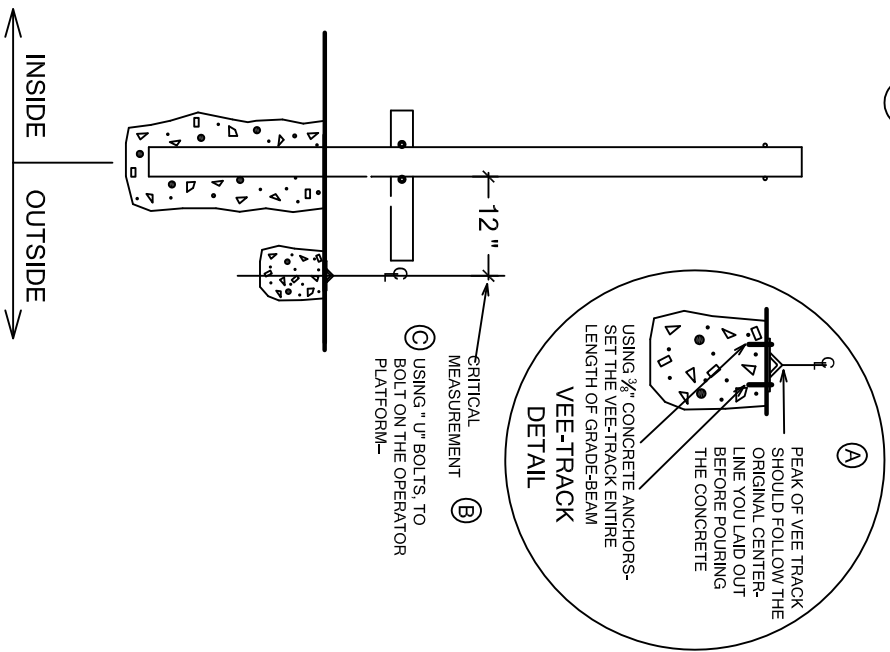
LAYING OUT YOUR GATE



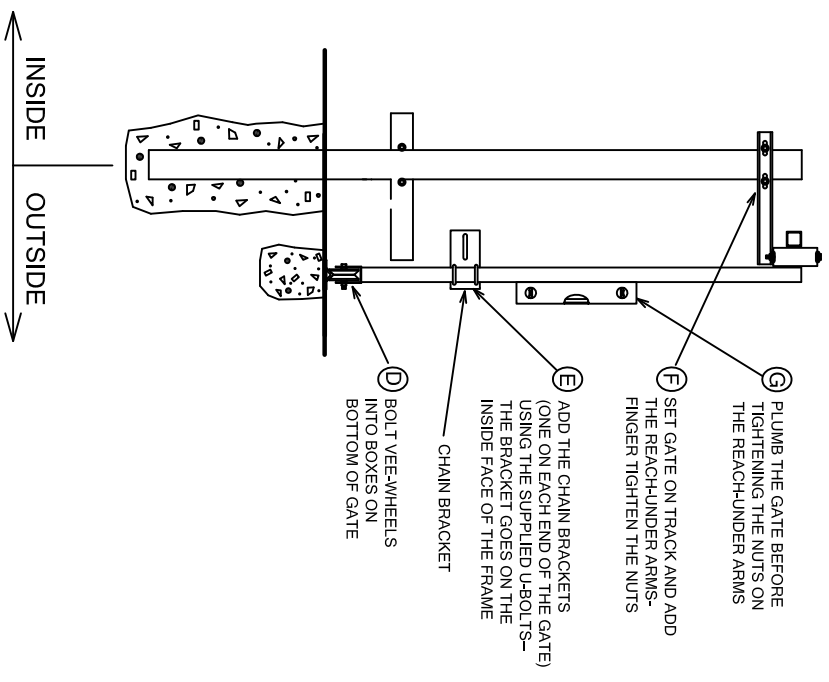
PROPERTY-SIDE VIEW

SLIDER-GUIDE INSTALLATION

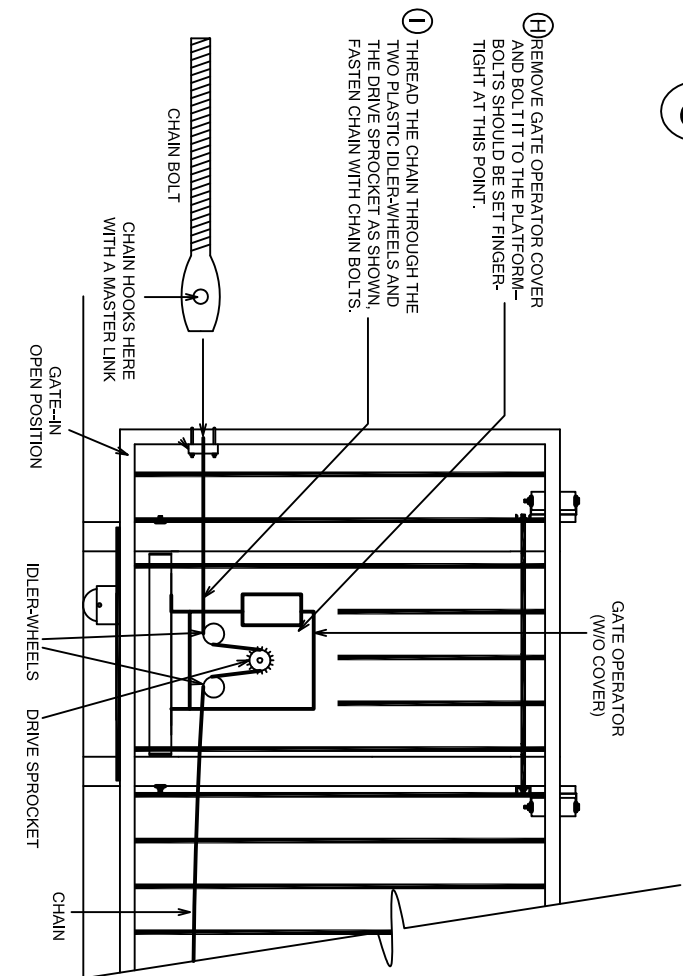
1



2



3



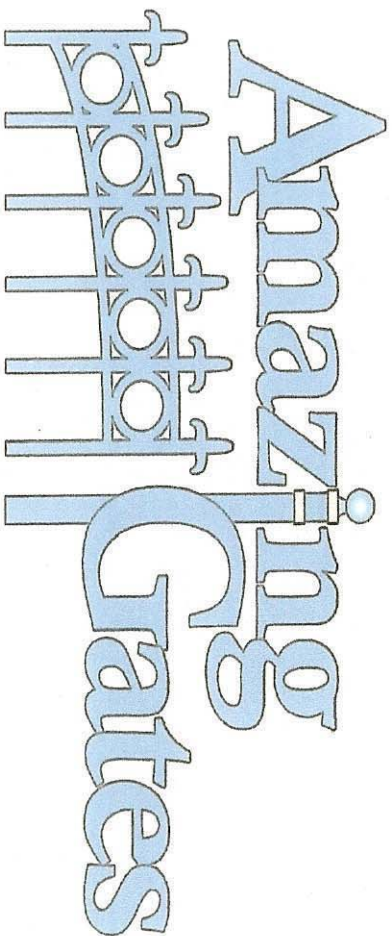
NOTES:

1. MAKE SURE THE CENTER SLOT ON THE CHAIN BRACKET IS LEVEL WITH THE BOTTOM OF THE IDLER-WHEEL.
2. THE CHAIN SHOULD NOT BE OVER TIGHTENED-- THERE SHOULD BE ABOUT A 2" TO 2 1/2" DROOP IN THE CHAIN WHEN THE GATE IS IN THE CLOSED POSITION.

3. BEFORE YOU FINALLY TIGHTEN THE OPERATOR MOUNTING BOLTS TO THE PLATFORM, BE SURE THE CHAIN AND THE GATE OPERATOR ARE PARALLEL TO THE GATE. THERE ARE SLOTS IN THE PLATFORM THAT ALLOW THIS ADJUSTMENT.

4. THE FINAL STEPS OF HOOKING UP THE WIRING AND SETTING THE LIMIT SWITCHES WILL BE FOUND IN THE MANUFACTURERS MANUAL THAT COMES WITH THE GATE OPERATOR.

SLIDER-GUIDE INSTALLATION



INSTALLING AN AMAZING GATES SLIDER GUIDE

PLEASE! READ ALL INSTRUCTIONS!

***INSTALLATION TIP: FOLLOW THESE STEPS IN ORDER**

1. Lay out and set the "V" Track (can be anchor bolted to existing driveway or set in fresh concrete)
2. Attach guide rail to back of slide gate
3. Attach "V" Wheels to wheel boxes and place gate on V Track. Temporarily brace the slide gate plumb level and square.
4. Follow instructions for slider guide installation (made easier by having gate in place)
5. Set operator stand in place and pour concrete for both slider guide and operator stand
6. Permanently hook up gate to slider guide
7. Install mesh Safety Screens
8. Refer to gate operator mounting instructions
9. Install gate operator

AMAZING GATES OF AMERICA LLC

800-2324-3952

WWW.AMAZINGGATES.COM